

What's on highlights for 2013...

March

Easter Eggs-travaganza

Sun 31 and Mon 1 April, 10-4pm

Normal admission applies

Hop along to Hidcote and join in the Easter fun. Hunt the clues, solve the puzzle and win an egg-tastic prize.



April

Hedge Cutting Masterclass*

Thu 18, 10-2pm

Adult £30

Join our expert gardener to learn more about how we cut the miles of hedges at Hidcote. See what we do, why we do it and discover techniques to help improve and maintain your own hedges. Morning coffee and a tasty lunch included.

June

Hidcote's Hidden Secrets*

Fri 28, 7pm

Adult £20

Enjoy a garden tour with a difference. Have you ever wanted to know our hidden secrets and quirky stories? Then here's your chance to find out. An evening not to be missed.

September

Sculpture Trail

Sat 7 to Sun 29

(excluding Thu and Fri), 10-5pm

Normal admission applies

Celebrate the best of contemporary art. Explore the garden and be inspired as talented artists showcase their work.

* Booking essential by calling 01386 438333

This is just a taster of our exciting events. Please visit www.nationaltrust.org.uk/hidcote for a full events listing.

May

Twilight Bat Walk*

Fri 10, 7.30pm

Adult £15

Become a true nature detective with our bat expert. Explore the garden with bat detectors and discover which bats have made Hidcote their home. Includes light refreshments.

August

The Hidcote Play – Sherlock Holmes and the Hound of the Baskervilles*

Sat 17, gates open 7pm

Adult £15, child £7.50,

family £40

Pack a picnic and your best detective skills for an unforgettable evening of outdoor theatre.

November

The Enchanted Garden

Fri 22, Sat 23, Sun 24, Fri 29, Sat

30 and Sun 1 Dec, 5-8pm


Adult £7, child £5, family £18


See Hidcote like you've never seen it before. Discover the garden at dark and admire the spine-tingling silhouettes as you're guided around our spectacular light display.

Do more with the National Trust

Join us and get in free



 Informal stone paths and steps mean access is difficult to some parts of the garden. Assistance dogs are welcome.

 4 miles NE of Chipping Campden; 8 miles S of Stratford, and signposted from B4632, near to Mickleton.

Opening Information 2013

Adult £10.50*, child £5.25*, family £26* (2 adults & 3 children). National Trust members FREE. Children 5 years and under FREE. *Price includes voluntary gift aid donation; visitors can, however, choose to pay the standard admission charges which are displayed at the property and at www.nationaltrust.org.uk.

Opening times	M	T	W	T	F	S	S
16 Feb – 10 Mar		11 - 4				✓	✓
16 Mar – 28 Apr		10 - 6	✓	✓	✓	✓	✓
29 Apr – 1 Sept		9 - 7	✓	✓	✓	✓	✓
2 Sept – 29 Sept		10 - 6	✓	✓	✓	✓	✓
30 Sept – 3 Nov		10 - 5	✓	✓	✓	✓	✓
9 Nov – 22 Dec		11 - 4				✓	✓

Open Good Friday. All facilities close at the same time as last admission (one hour before closing).

For alternative formats, please call us on 01386 438333 or email hidcote@nationaltrust.org.uk

Hidcote Manor Garden, Hidcote Bartrim, Chipping Campden, Gloucestershire, GL55 6LR. Tel: 01386 438333 Fax: 01386 438817
Email: hidcote@nationaltrust.org.uk
www.nationaltrust.org.uk/hidcote

Photography ©: NTPL/Ian Shaw/David Levenson/Stuart Cox/Paul Harris/Daniel Bosworth
Printed on 100% recycled paper. Please recycle this leaflet after use.
© National Trust 2010. National Trust is an independent registered charity, number 205846
Produced by RMR Creative 0845 3885495.

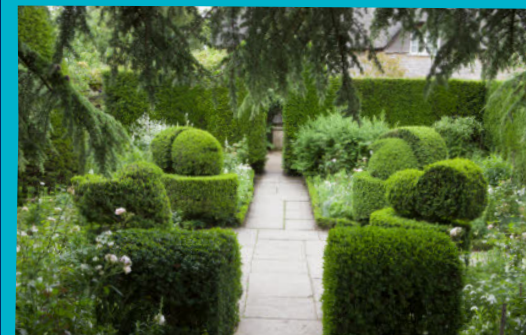
Discover

Hidcote

An inspirational garden for all seasons



National Trust

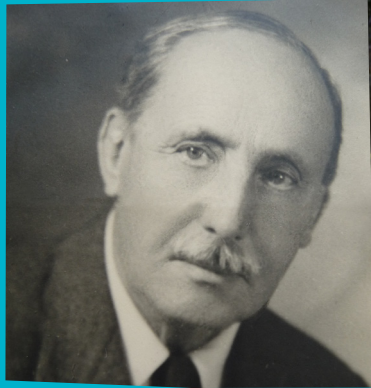


Discover rare shrubs and trees, herbaceous borders and unusual plants from around the world

Be inspired by breathtaking garden design and planting

Experience the fulfilment of a quiet American's English fantasy

Mrs Winthrop bought her son Lawrence Johnston an exposed field high up on a Cotswold hill. In just over 30 years he turned it into one of the country's great Arts and Crafts gardens.



'Probably the best NT garden we have visited so far. The 'rooms' were a delight to discover'

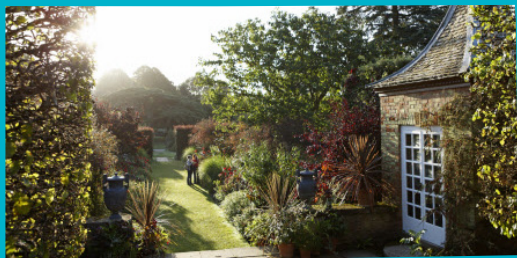
Chris Greig, Milton Keynes



Explore the intricate network of original stone pathways and discover magnificent vistas and secret gardens.



There's always **something new to see** as he carefully designed each garden 'room' to peak at different times of the year.



Our shop and plant centre always have something to **inspire and tempt.**

Whatever the season

There's always something new to see...

- March** - Hellebores
- April** - Skunk cabbage, narcissi and magnolias
- May** - Tulips, handkerchief tree, wisteria, giant alliums and lilacs
- June** - Old roses and herbaceous plants
- July** - Herbaceous borders, lilies and lacecap hydrangeas
- August** - Fuchsias, dahlias and heliotropes
- September** - Japanese anemones and autumn crocus
- October** - Cobaeas, acers and tapestry hedges
- November** - Autumn colour
- December** - Garden structure



Pick up our new Hidcote Hunter pack and let the children get stuck into **awesome nature activities.**

If you've still got **energy to burn** why not enjoy a game of tennis on our all-weather court?



Make the most of your day and enjoy a **delicious** meal in our Winthrop's Café and conservatory, with seasonal menus inspired by tasty produce straight from our kitchen garden. Our home made cakes are pretty amazing too.

'I was so overwhelmed by the genius design and magnificent beauty...It's stunning'

Joe Anderson, Halesowen

